

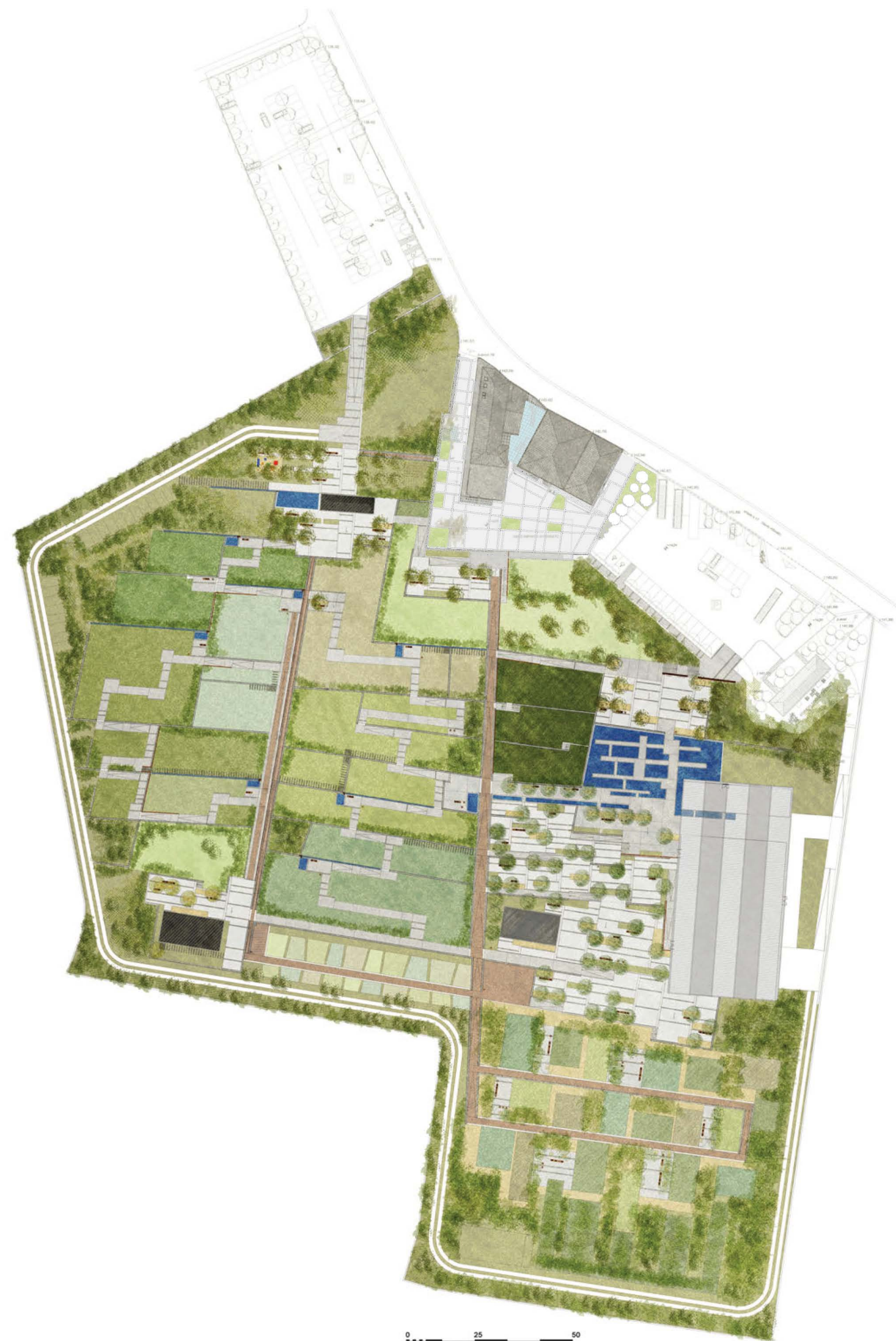


RADICEPURA

GIUSEPPE SCANNELLA

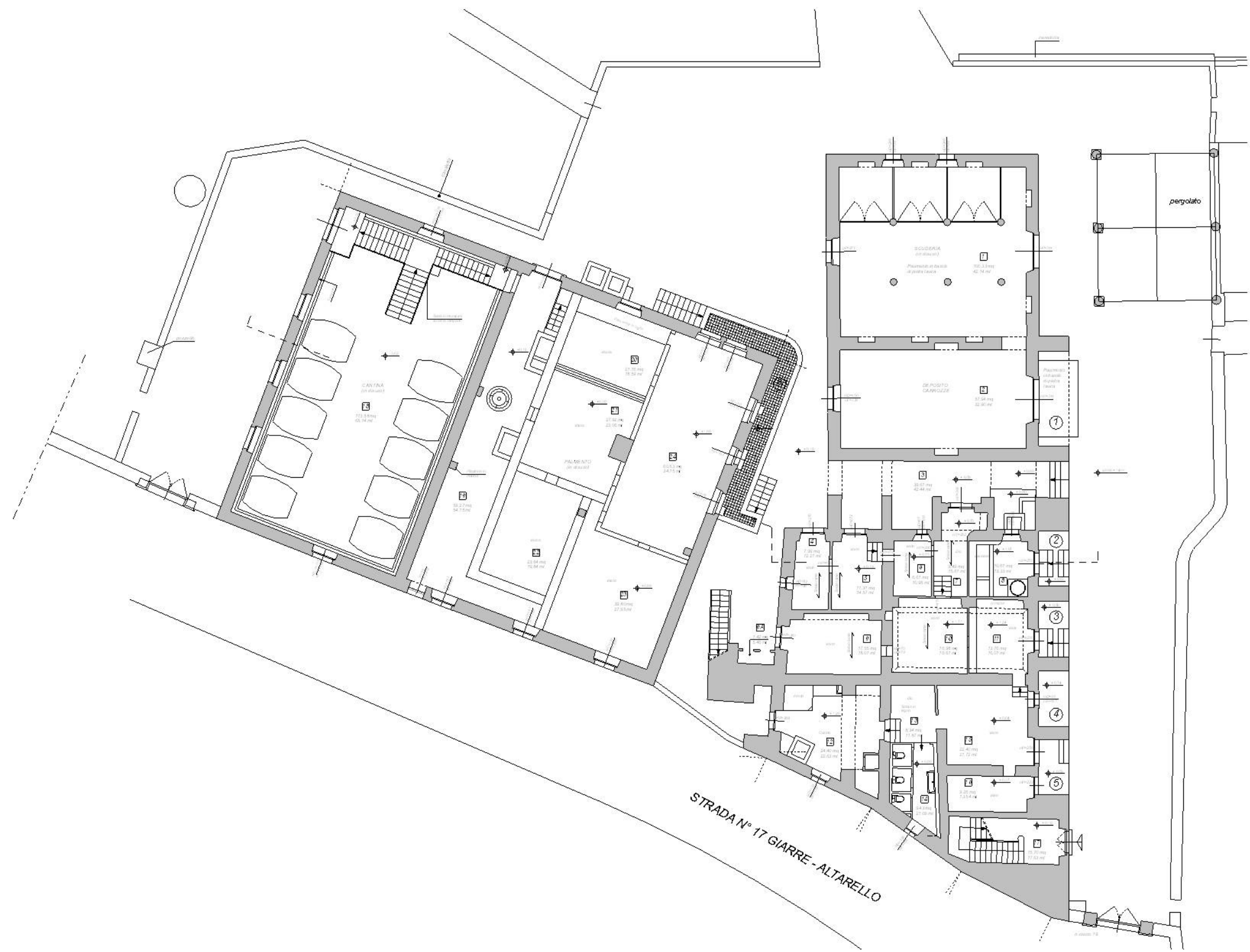
RADICEPURA

CENTRO CONGRESSI

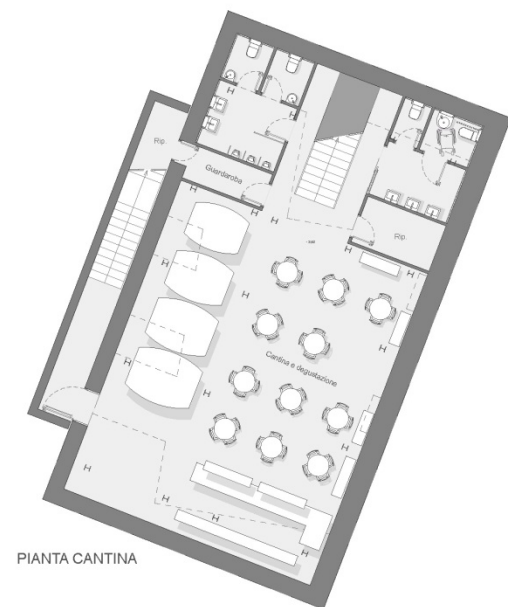


IN UN IMMENSO PARCO BOTANICO UN'ANTICA STRUTTURA PADRONALE DIVENTA UN CENTRO CONGRESSI E MEETING D'ECCELLENZA, ATTRAVERSO UN RESTAURO ATTENTO ABBINATO A UNA REINTERPRETAZIONE DEI SUOI ELEMENTI CARATTERIZZANTI.

RADICE PURA CONVENTION CENTRE
IN A HUGE BOTANICAL GARDEN, AN ANCIENT MANOR HOUSE BECOMES A CONFERENCE CENTRE AND A MEETING POINT OF EXCELLENCE, THROUGH A CAREFUL RENOVATION COMBINED WITH A REINTERPRETATION OF ITS DISTINGUISHING ELEMENTS.



RILIEVO

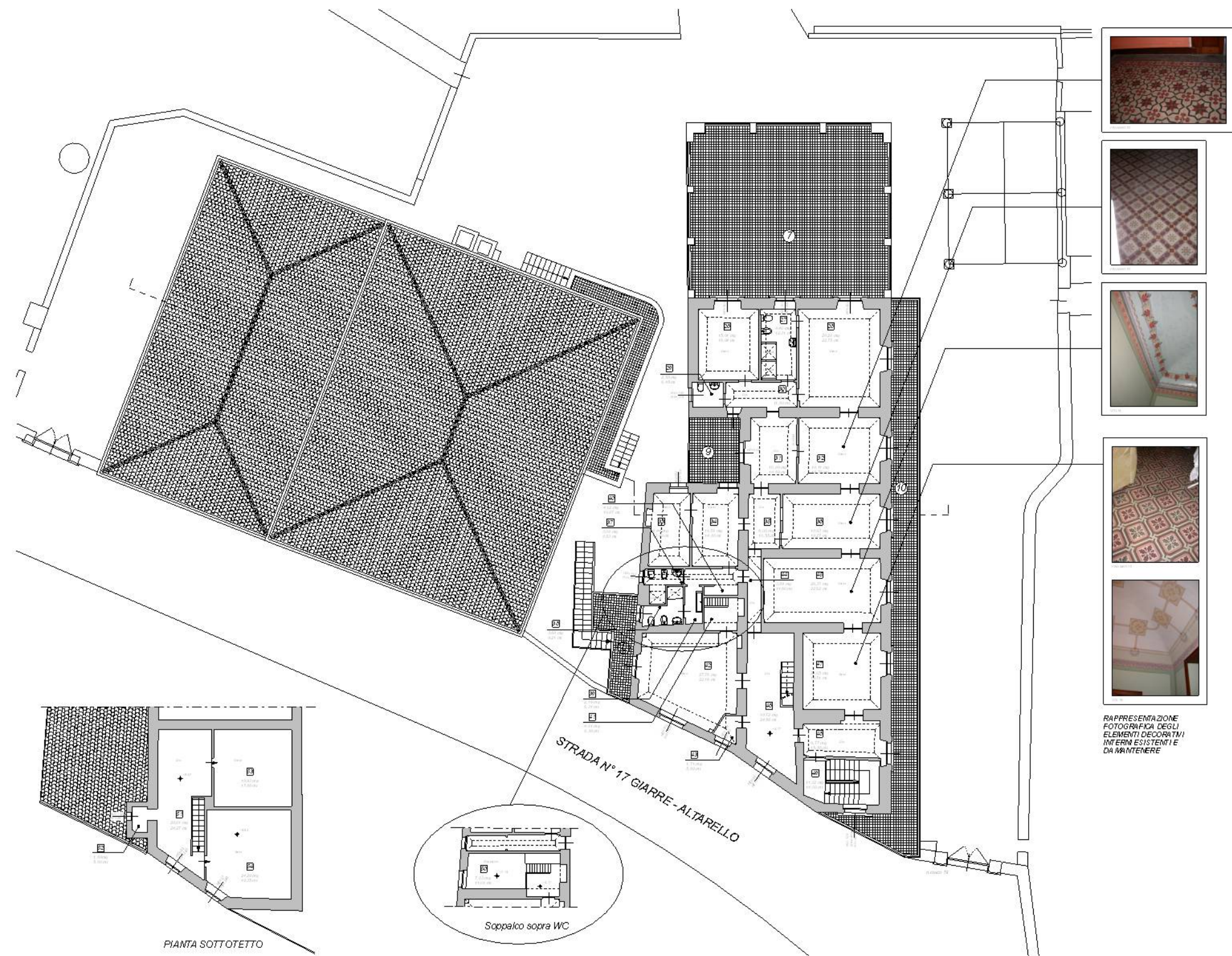


PIANTA CANTINA

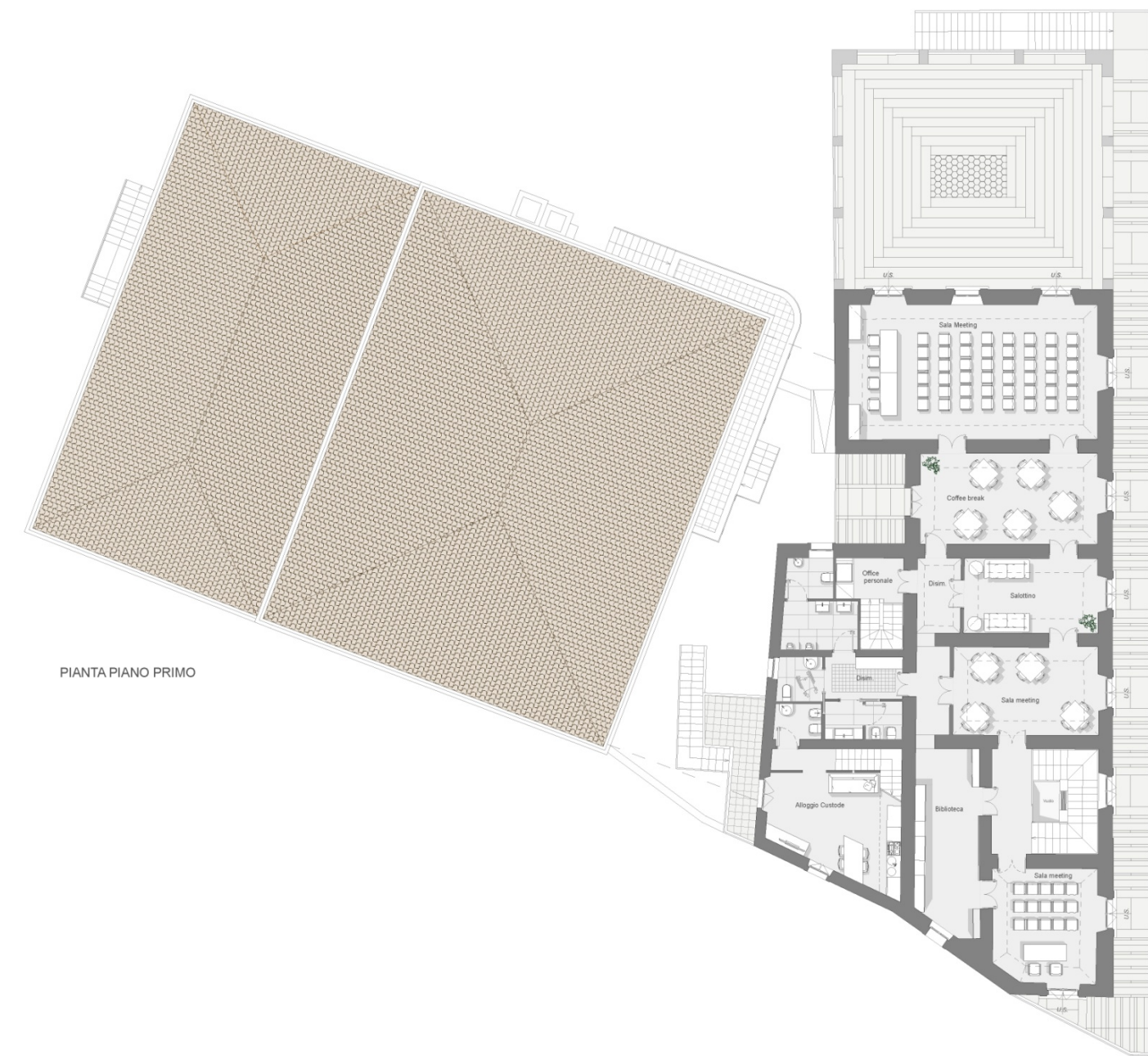


PIANTA PIANO TERRA

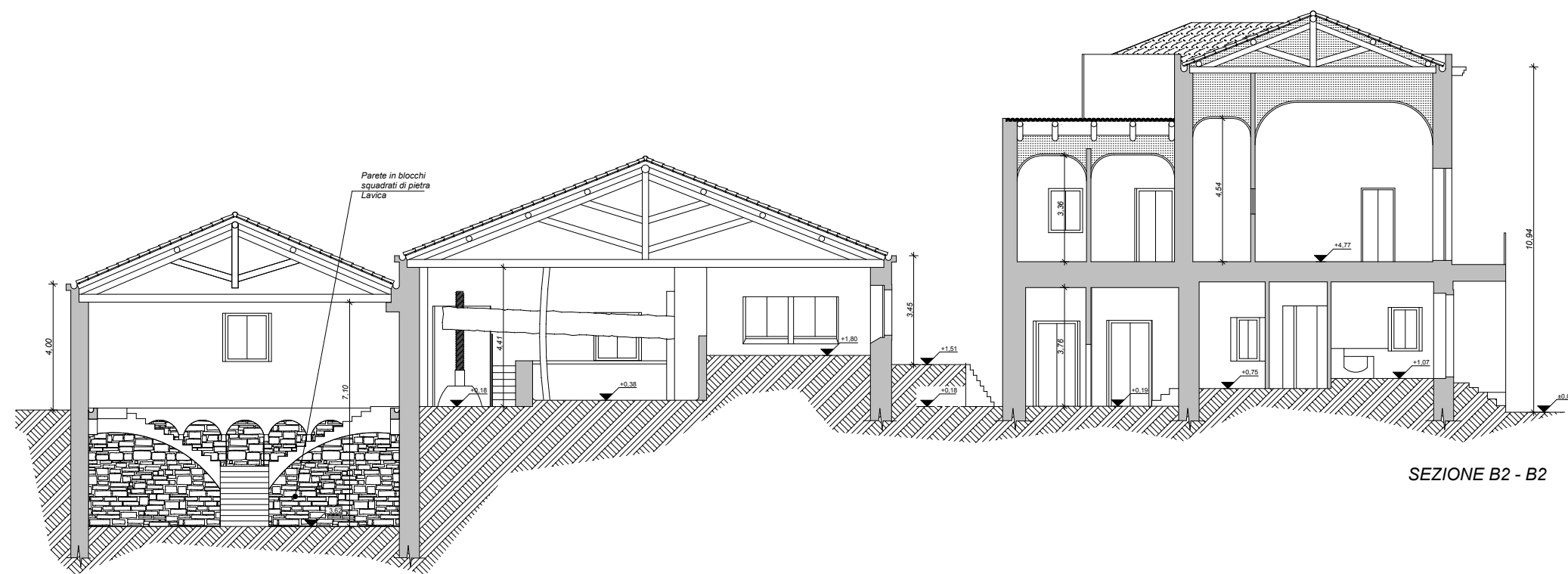
PROGETTO



RILIEVO

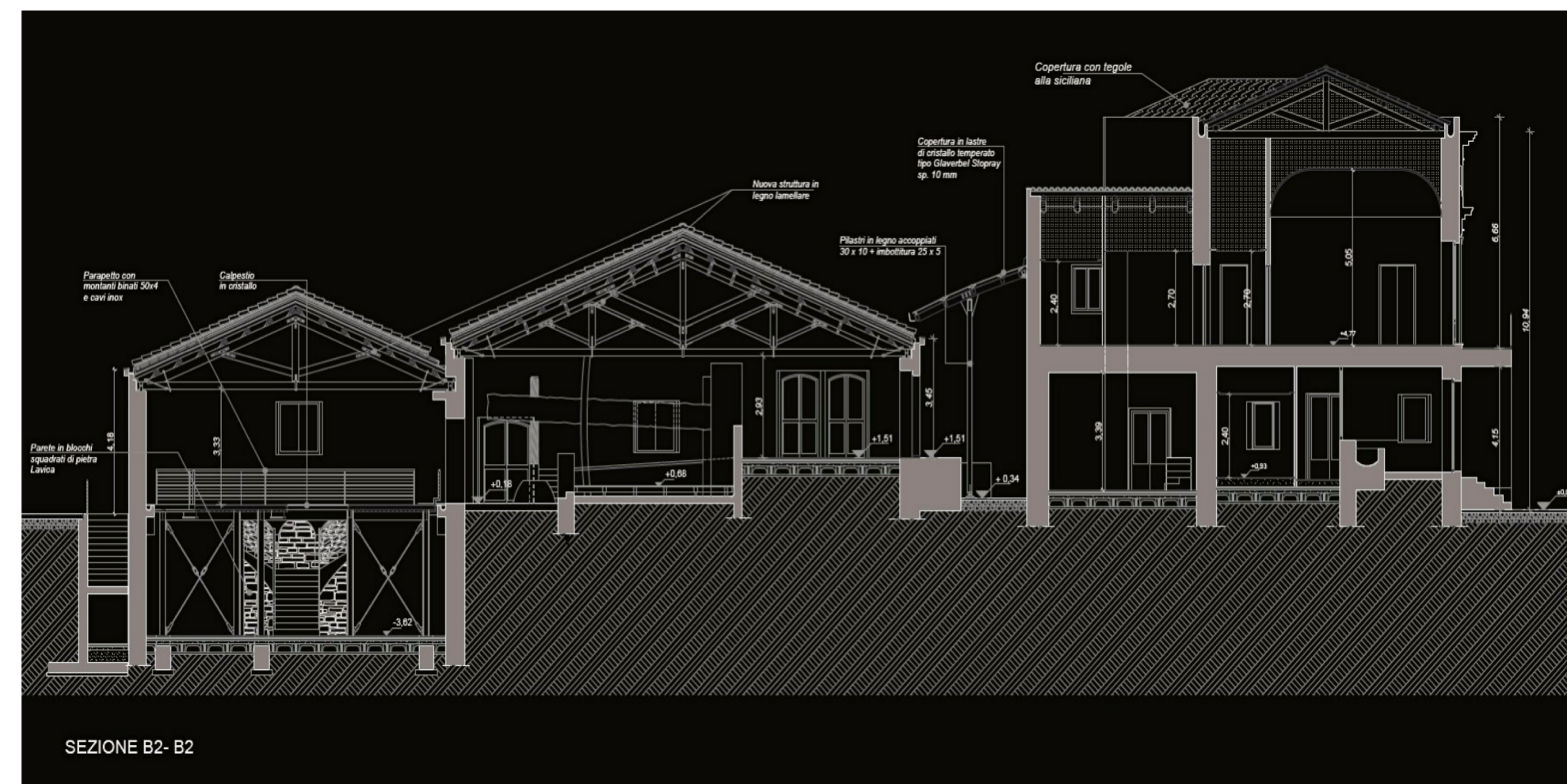


PROGETTO



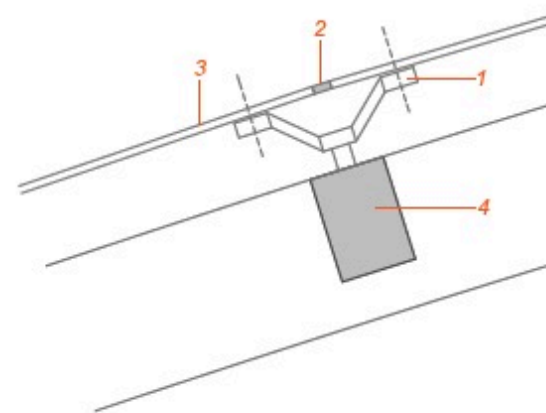
SEZIONE B2 - B2

RILIEVO



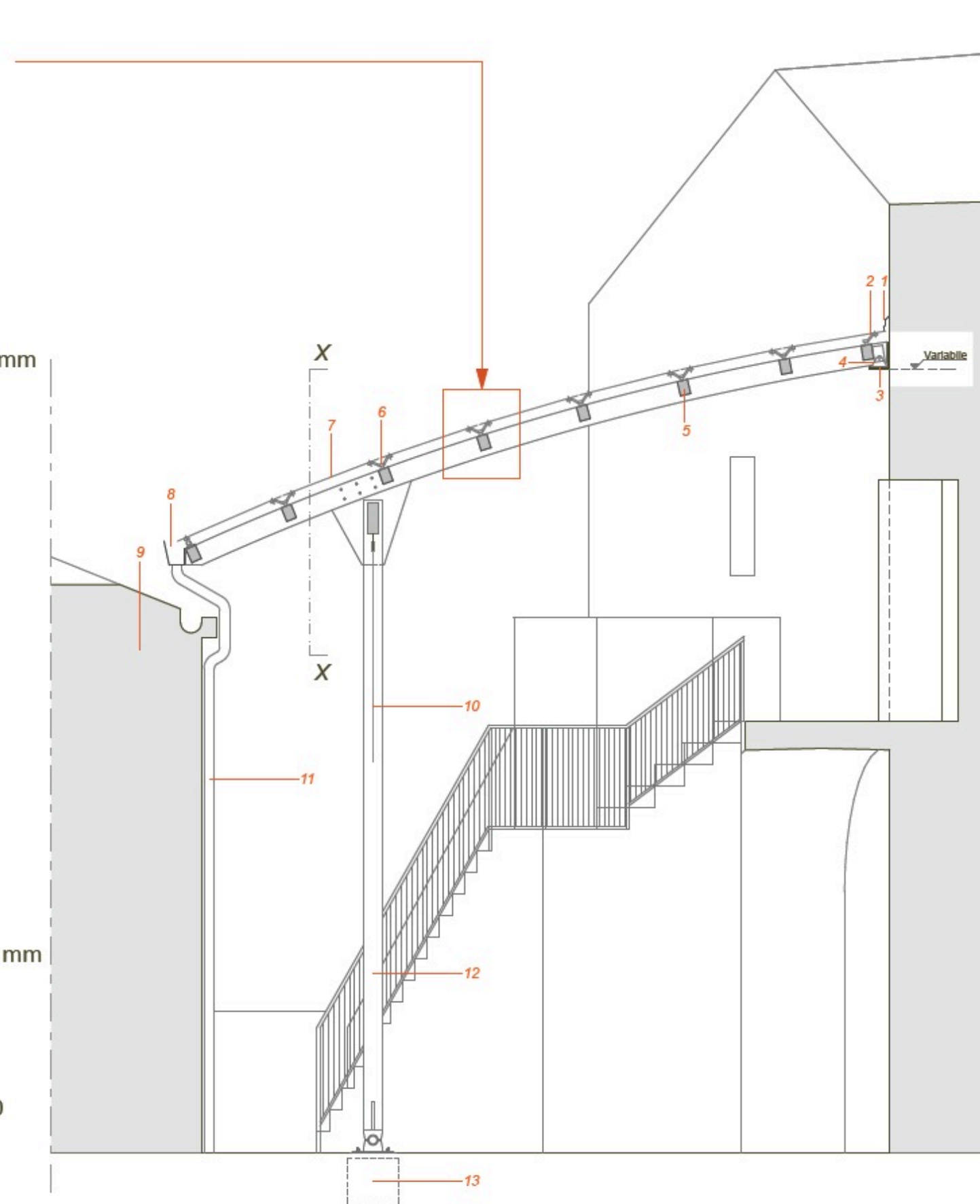
SEZIONE B2 - B2

PROGETTO



PARTICOLARE

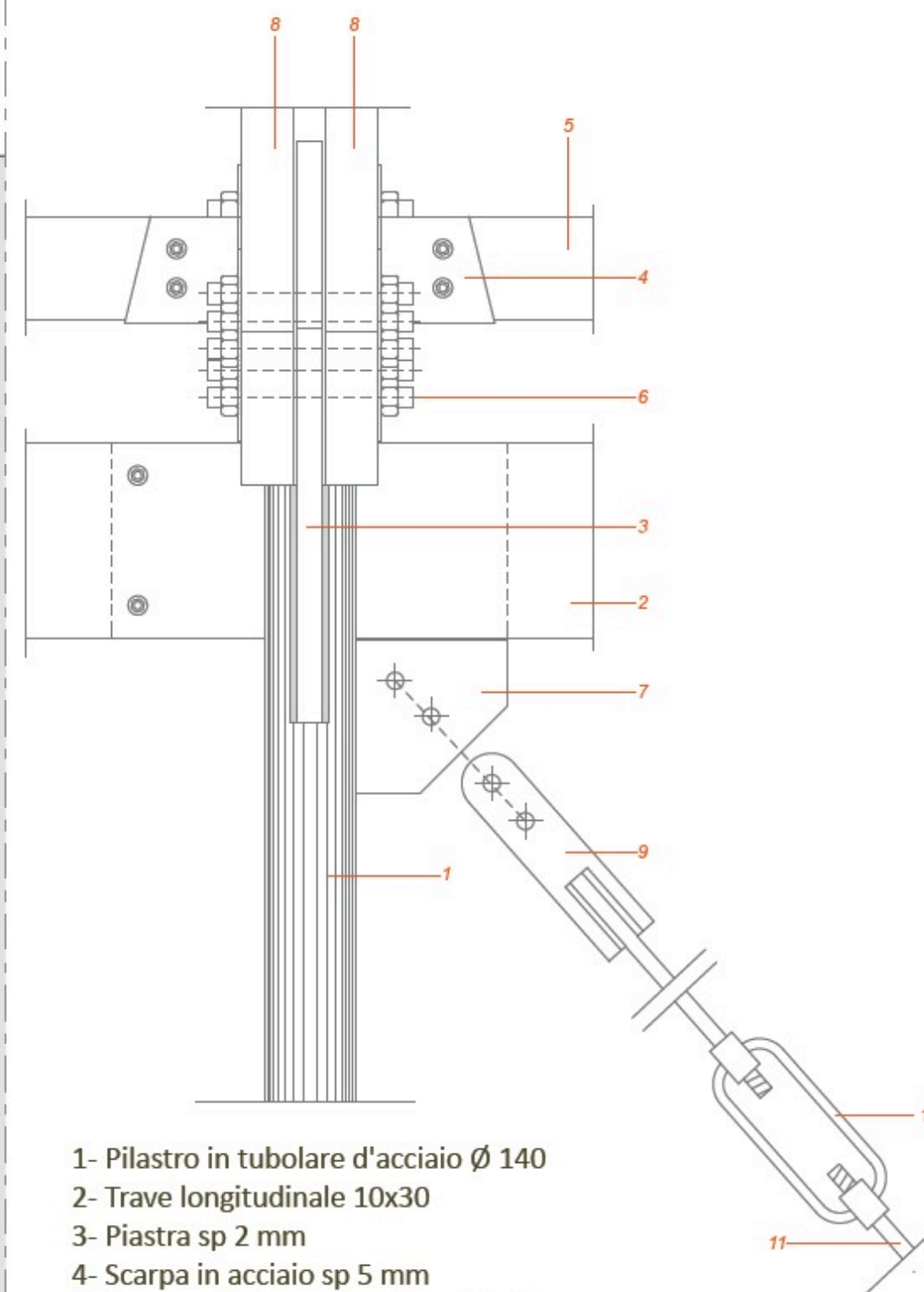
- 1- Crociere a 4 punti tipo Faraone
- 2- Silicone strutturale
- 3- Lastra tipo Glaverbel Stopray sp. 10mm
- 4- Arcareccio in legno 14 x 10



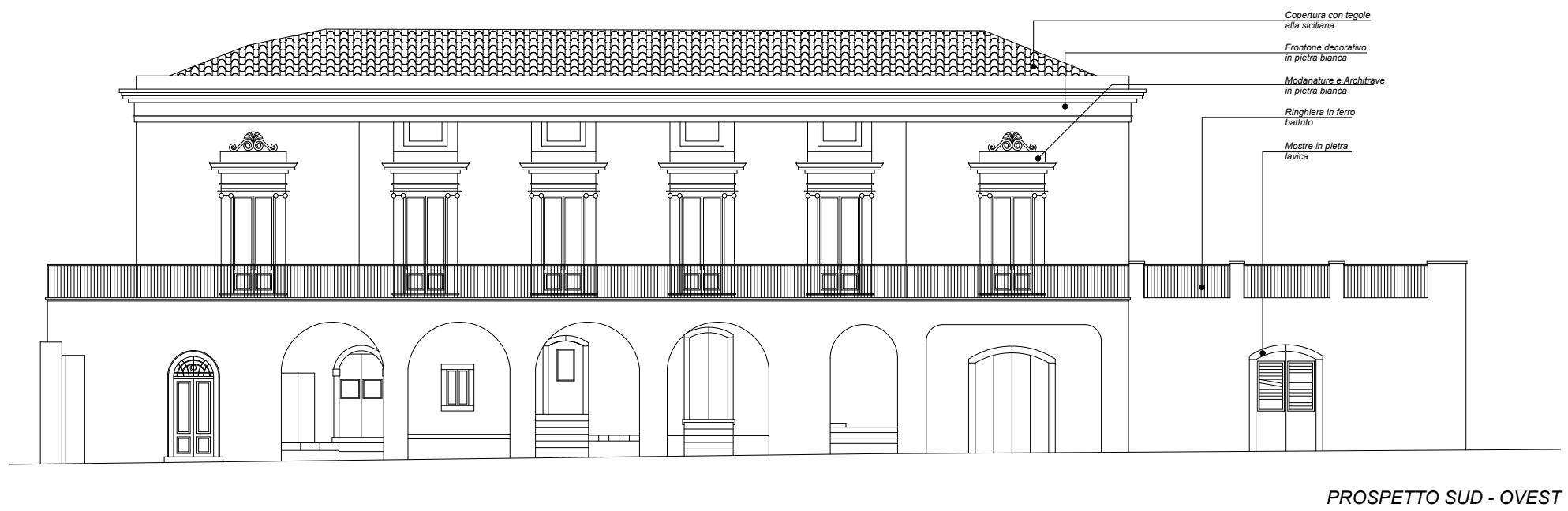
SEZIONE TIPICA

- 1- Scossalina metallica
- 2- Crociera a 2 punti
- 3- Sella di appoggio inox
- 4- Cerniera Inox
- 5- Arcareccio in legno 14 x 10
- 6- Crociere a 4 punti tipo Faraone
- 7- Lastra tipo Glaverbel Stopray sp. 10 mm
- 8- Grondaia in rame
- 9- Palmento
- 10- Controvento in acciaio
- 11- Pluviale
- 12- Pilastro in tubolare d'acciaio Ø 140
- 13- Cordolo in C. A.

PARTICOLARE SEZIONE X-X



- 1- Pilastro in tubolare d'acciaio Ø 140
- 2- Trave longitudinale 10x30
- 3- Piastra sp 2 mm
- 4- Scarpa in acciaio sp 5 mm
- 5- Arcarecci in legno lamellare 14x16
- 6- Bulloni di fissaggio
- 7- Piastra sp. 8 mm di controventatura
- 8- Travi principali in legno accoppiato da 8x24
- 9- Piatto di collegamento alla barra mediante saldatura
- 10- manicotto tenditore
- 11- Barra di controventatura



RILIEVO

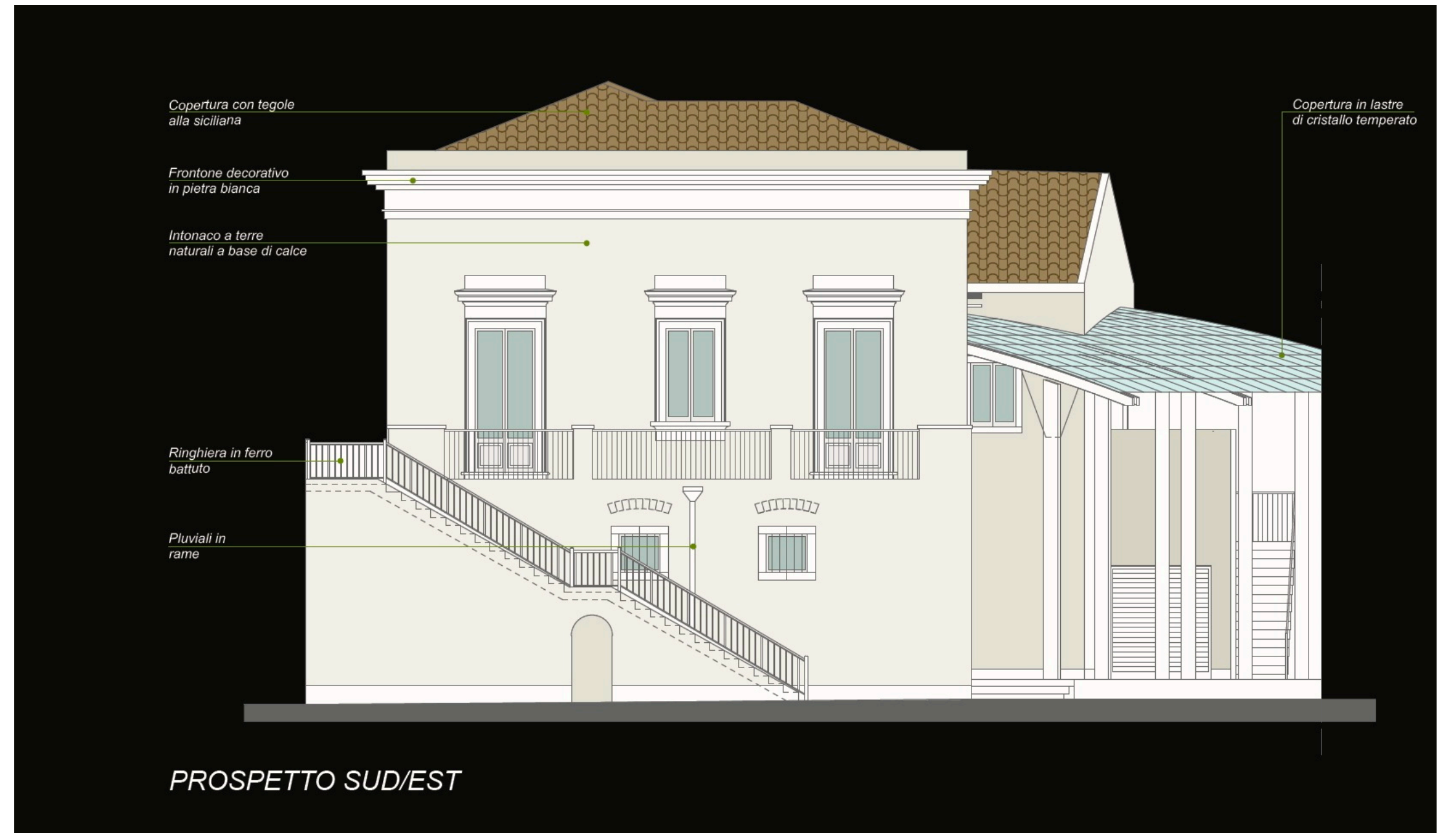


PROGETTO



PROSPETTO SUD - EST

RILIEVO



PROSPETTO SUD/EST

PROGETTO

















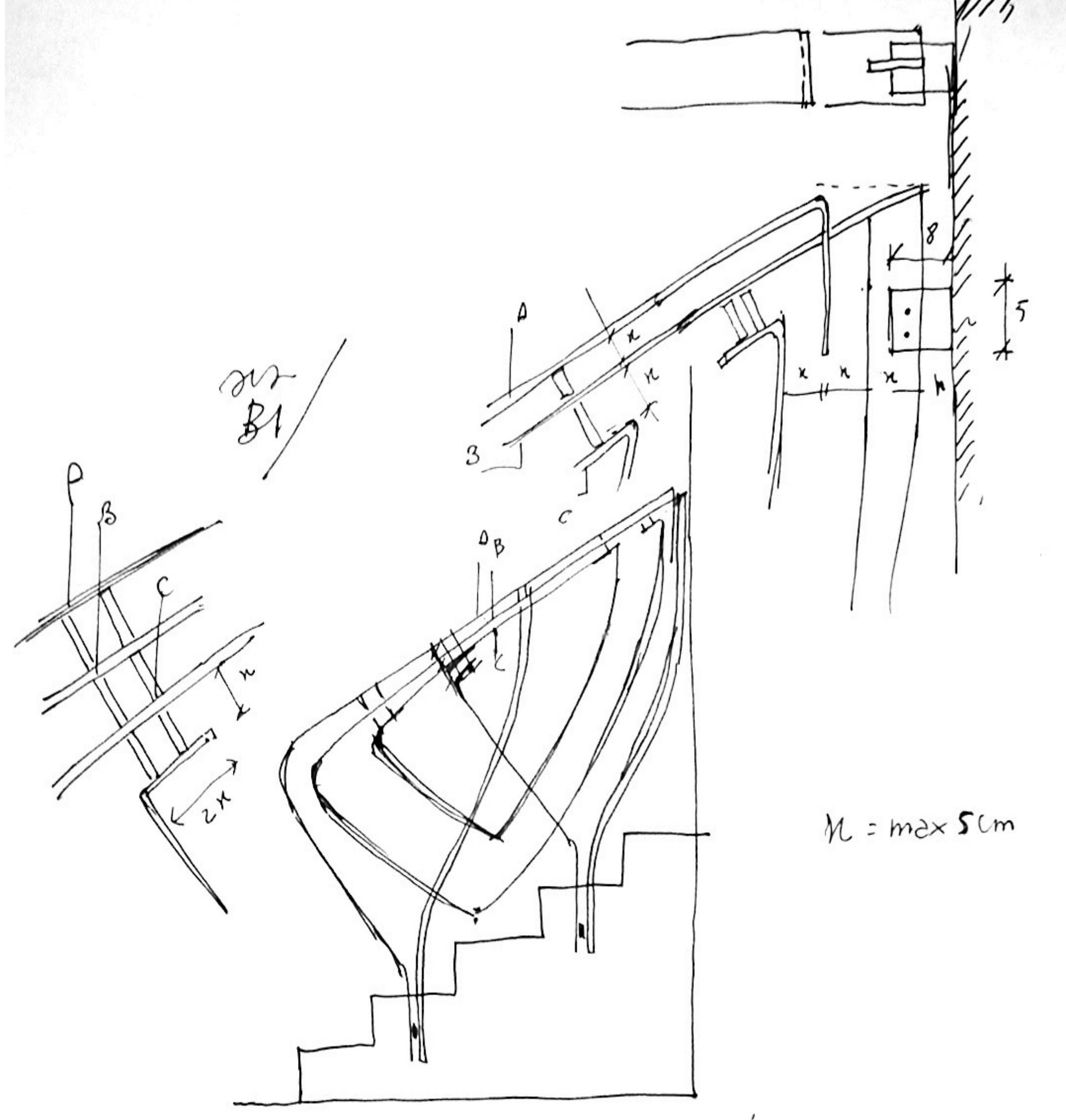
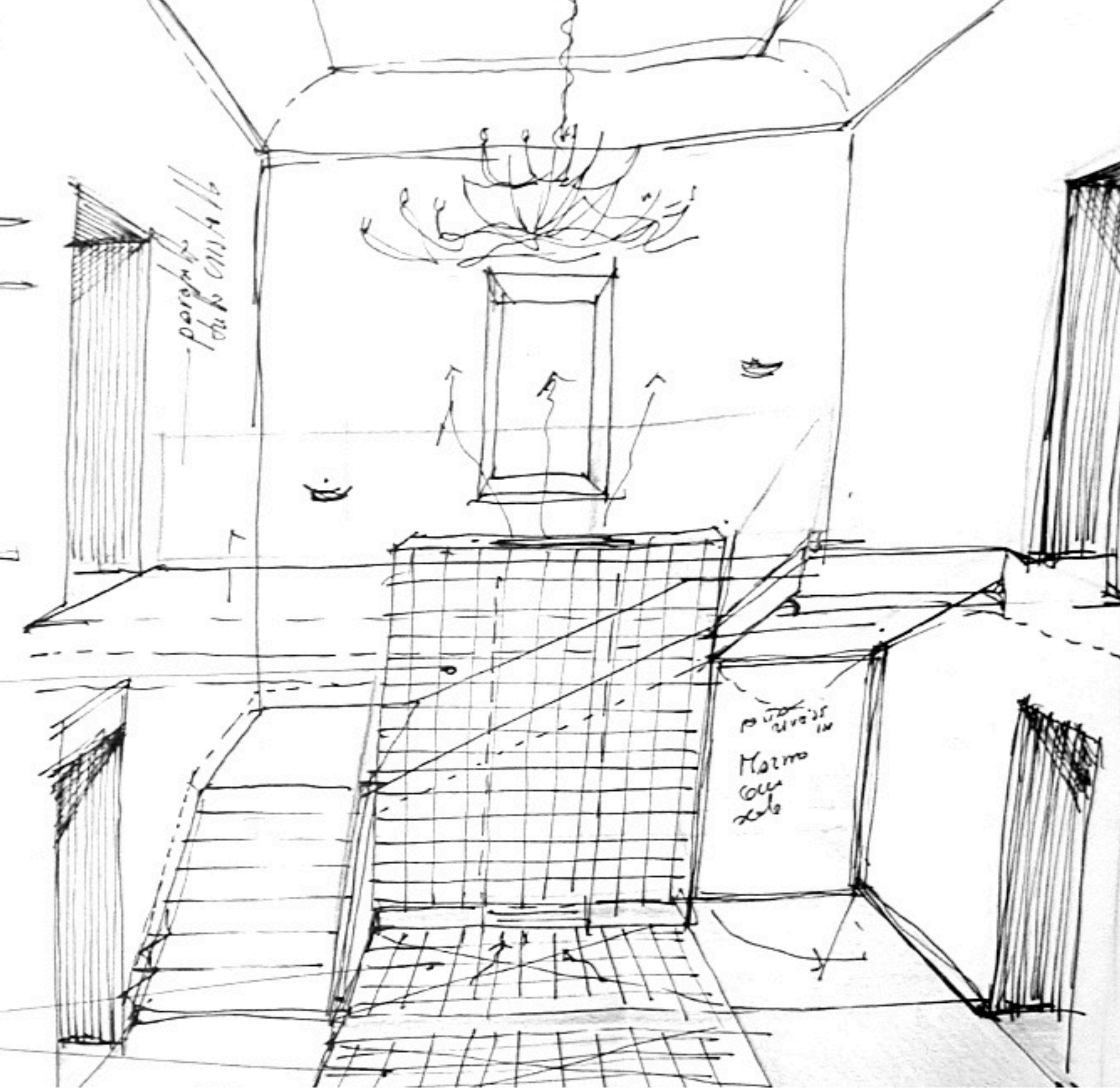


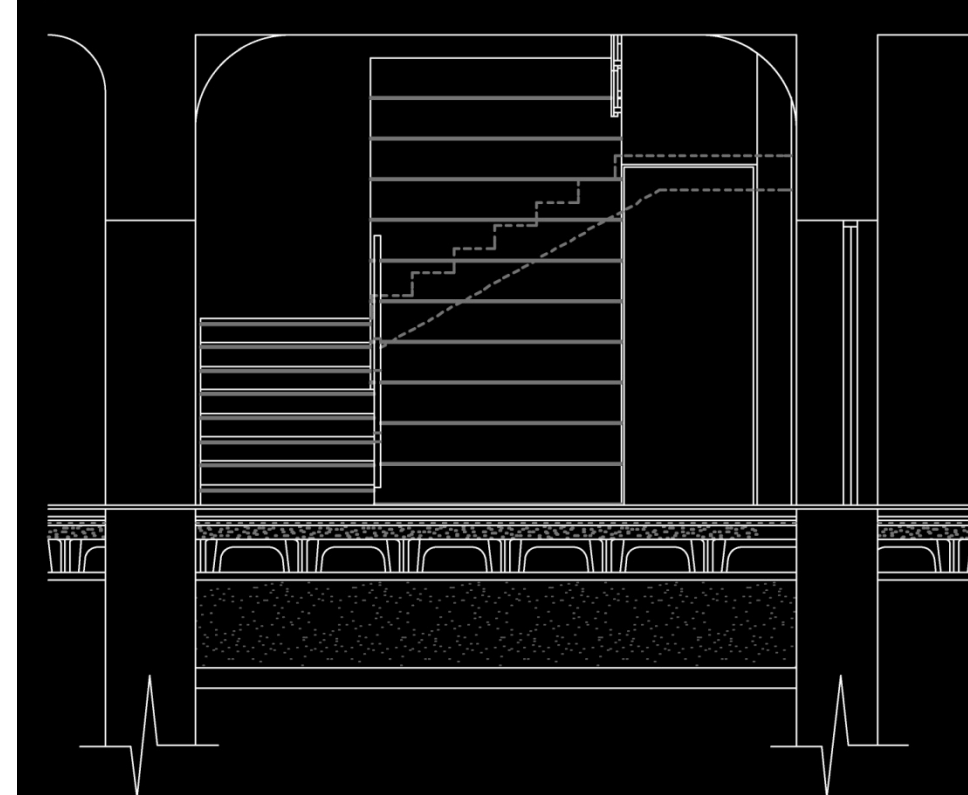
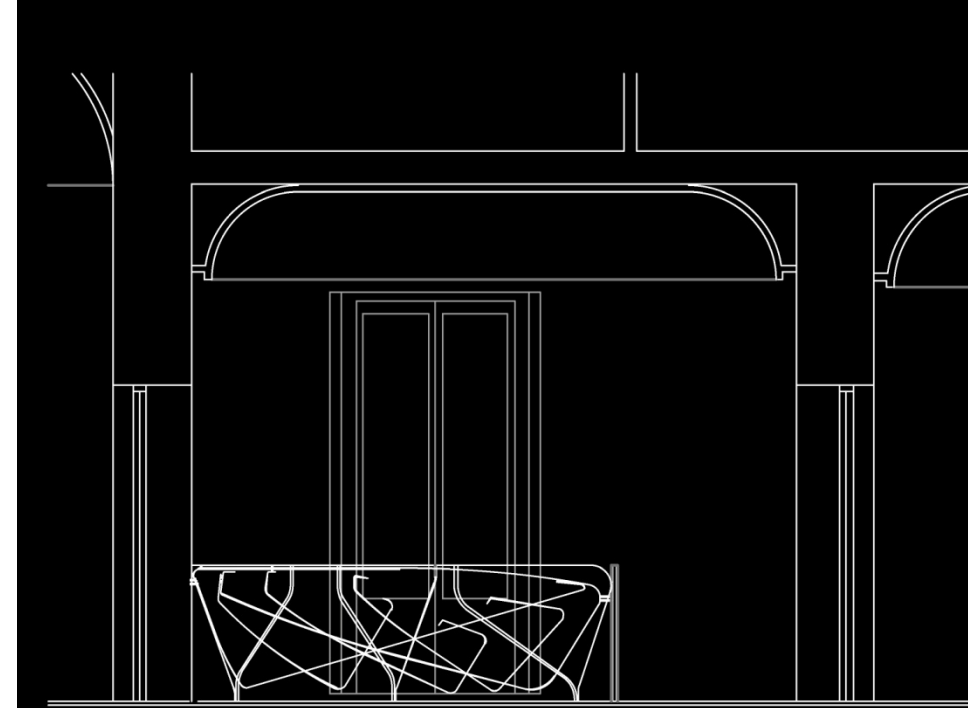




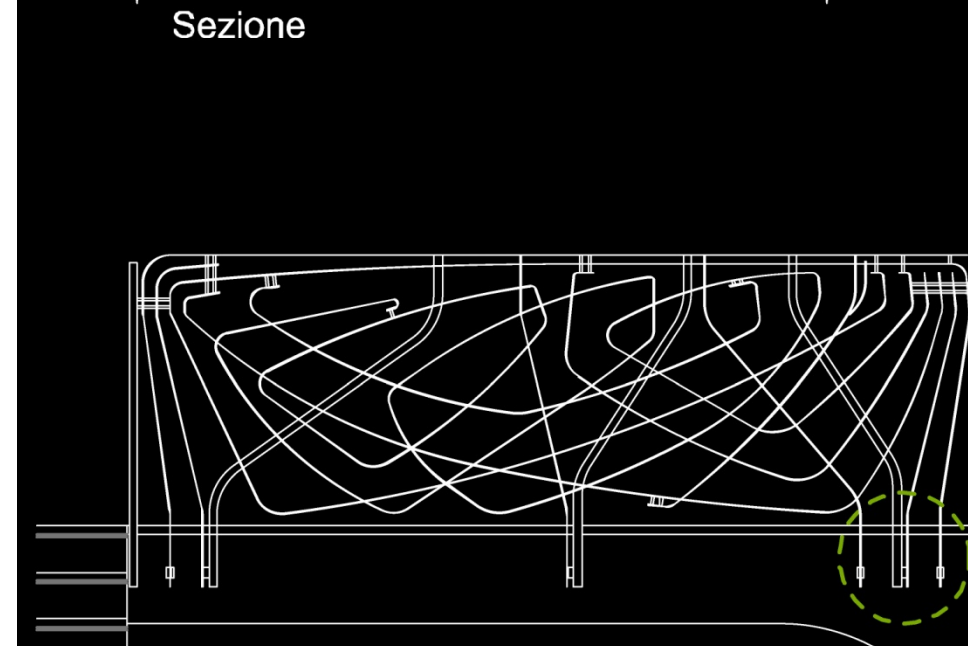




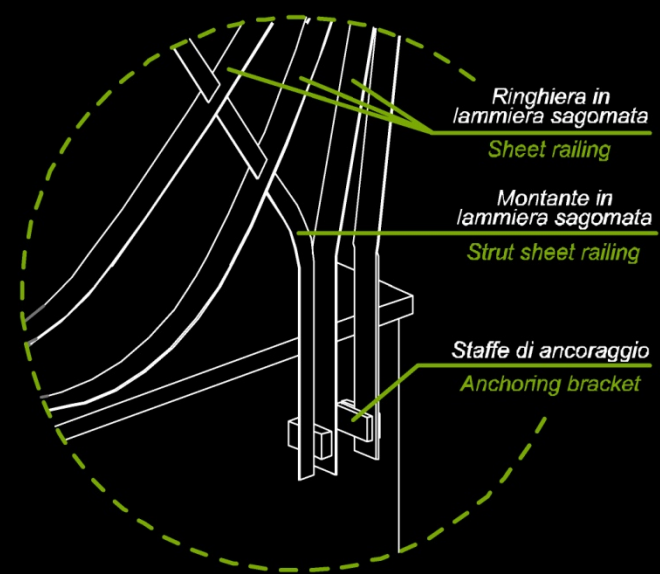
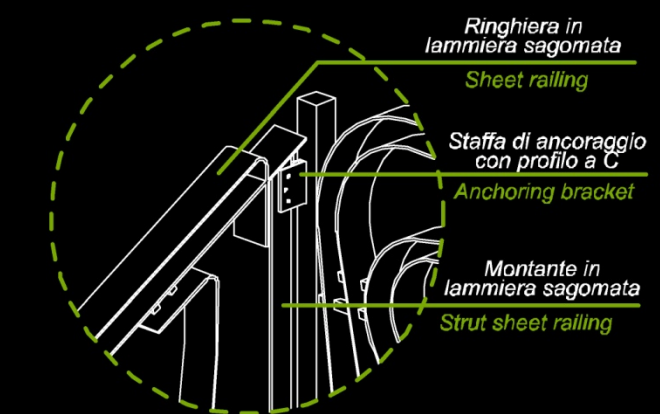
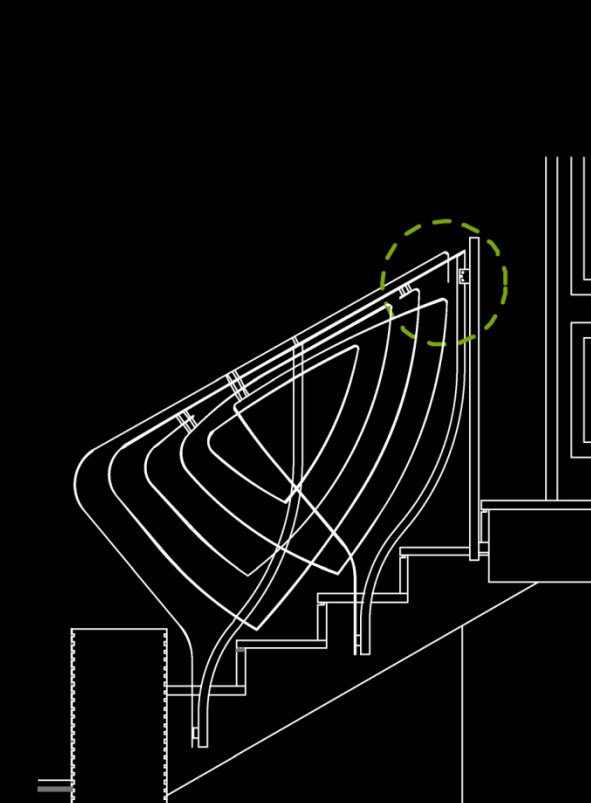




Sezione



Prospetto















ALCUNI DATI:

Cronologia lavori

2005-2012

Superficie complessiva

mq.56040

Superfici coperte edifici esistenti

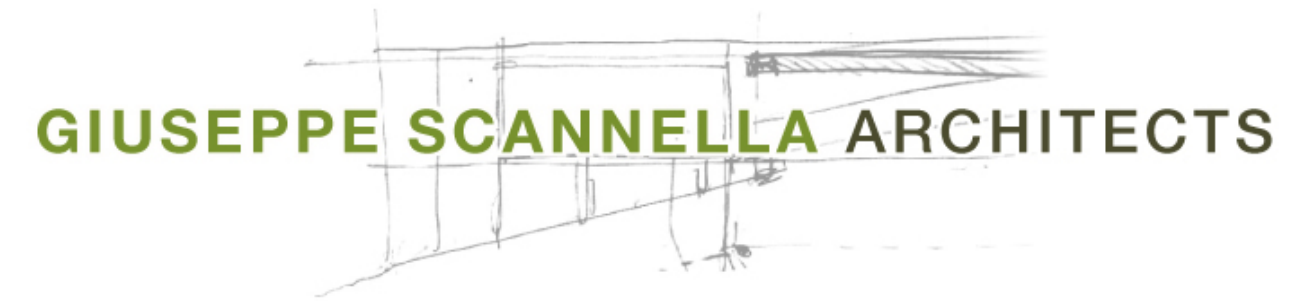
mq.1010

Superfici coperte nuovi edifici

mq.2000

Superfici a parcheggio

mq.5658



GRAZIE PER L'ATTENZIONE

www.scannella.it